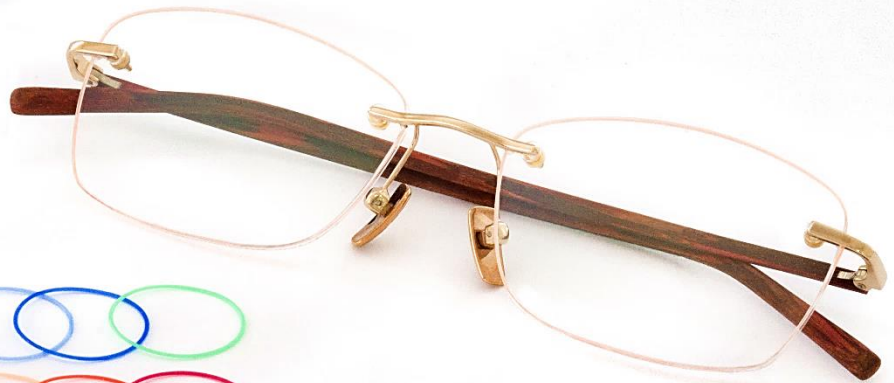
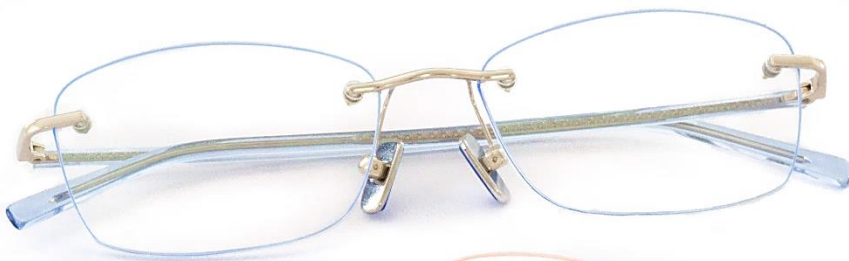
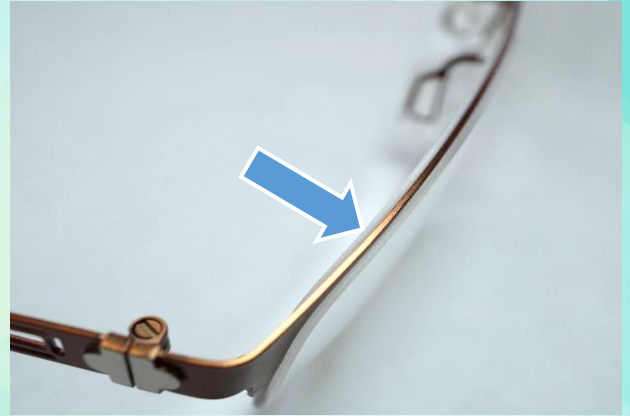
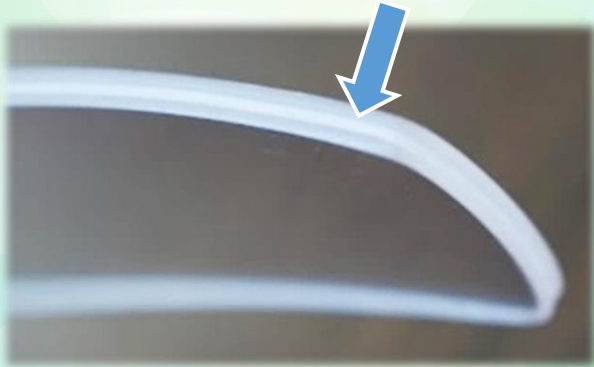


SPR & SPR colored

Colored types have been added to SPR (Silicone Protection Ring) for lens protection of frames made from very thin sheet front (Half rim groove for the lens) .

Would you like to spice up your rimless frame?



INTER EYES CO.,LTD.

EURO VISION CO.,LTD.

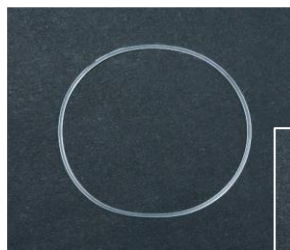
SPR is made of silicone.

It is a strong and hard-to-deteriorate material

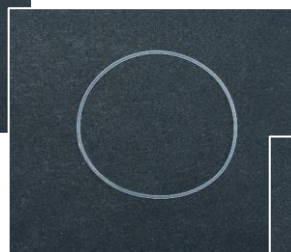


It does not break even if it is hung by weight of approximately 400g!

Size Variations



SPR32
 $\Phi 32 \times 0.5\text{mm}$

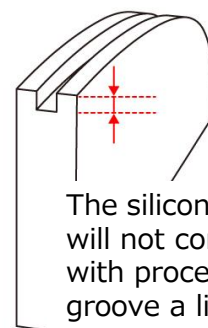
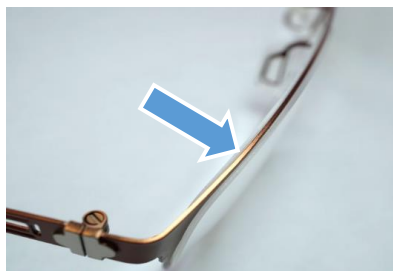
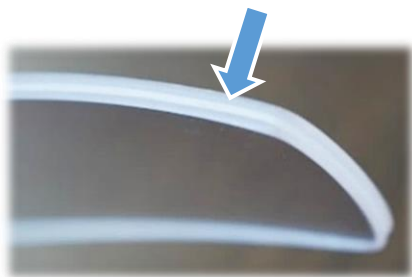


SPR27
 $\Phi 27 \times 0.5\text{mm}$



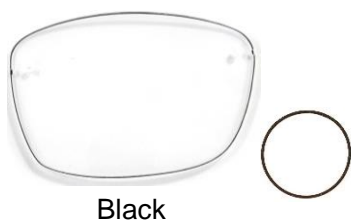
SPR20
 $\Phi 20 \times 0.6\text{mm}$

SPR27/32: For lens protection

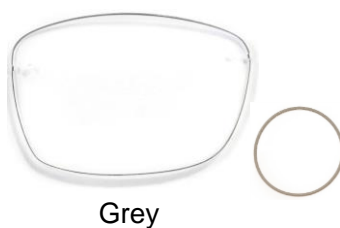


The silicon ring will not come off easily with processing the groove a little deeper.

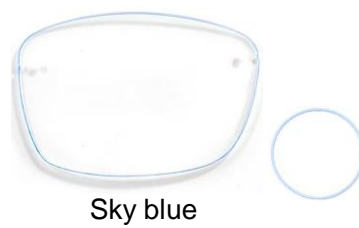
SPR20: For decoration of rimless frame



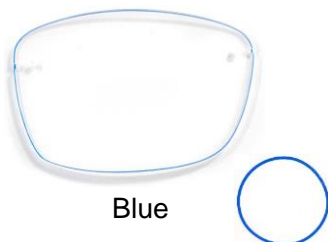
Black



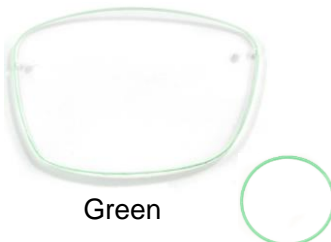
Grey



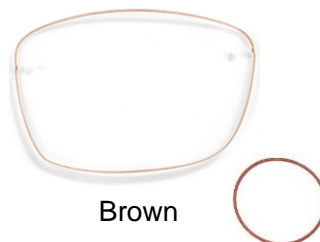
Sky blue



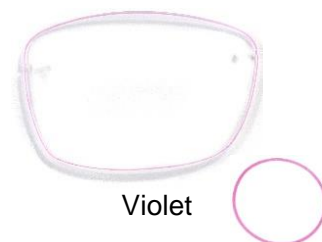
Blue



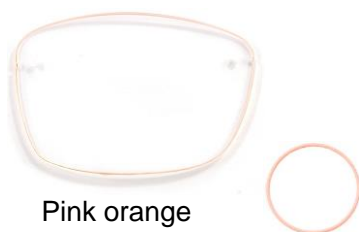
Green



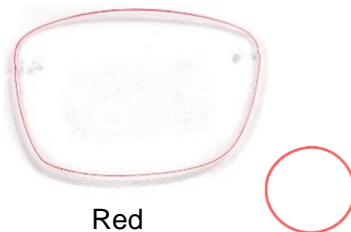
Brown



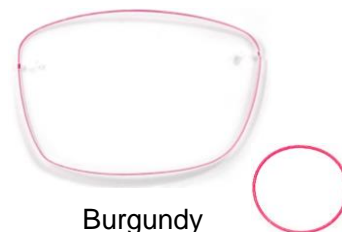
Violet



Pink orange



Red



Burgundy